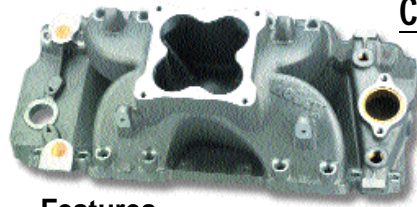




CHEVROLET MANIFOLDS

Part #



Chevrolet

396, 402, 427, 454, 502 V8
Rectangular port heads

9901-206

THROTTLE BODY RECOMMENDATIONS
9900-139 (2000 CFM)

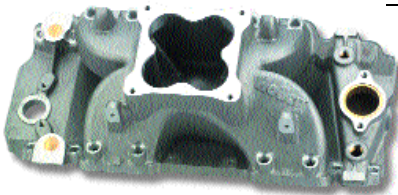
INSTALLATION

Will fit tall blocks with use of WEIAND spacer plate kit, P/N 8204.



Features

- Machined for standard deck blocks
- 3000-6500 RPM power band
- Designed for port fuel injection systems
- Accepts 2000 cfm Holley 4-bbl throttle body
- Single plane manifold design
- Brass engine coolant crossover passage
- Fuel rail kit available. Order Holley P/N 9900-149



Chevrolet

396, 402, 427, 454, 502
Rectangular Port V8

9901-208

THROTTLE BODY RECOMMENDATIONS
9900-135 (1000 CFM)

Features

- Machined for tall deck blocks
- 3000-6500 RPM power band
- Designed for port fuel injection systems
- Accepts 2000 cfm Holley 4-bbl throttle body
- Single plane manifold design
- Brass engine coolant crossover passage
- Fuel rail kit available. Order Holley P/N 9900-149.
- Performance fuel injection kits available.



Chevrolet

396, 402, 427, 454, 502
Oval Port V8

7544

CARBURETOR RECOMMENDATIONS
0-9022 (800 CFM); 0-80443 (850 CFM); 0-80444 (850 CFM)

INSTALLATION

Will fit tall blocks with use of Weiland #8206 manifold spacer plate kit.

SPECIFICATIONS

Height - frt. 4.50", rr. 6.00". Shipping weight is 23 lbs.



Features

- Machined for standard deck blocks
- 1500-7000 RPM power band
- Single plane/open plenum design
- Square flange carburetor mounting

CARBURETORS
FUEL INJECTION
FUEL PUMPS REGULATORS
INTAKE MANIFOLDS
SUPERCHARGERS
FLAME ARRESTORS THROTTLE BODIES
IGNITION SYSTEMS & COMPONENTS
CAVALIERS
HEADERS
WATER COMPONENTS
VALVE COVERS
TECHNICAL INFORMATION
INDEX

AIR SYSTEMS



CHEVROLET MANIFOLDS

Part #



Chevrolet

396, 402, 427, 454, 502
Rectangular Port V8

7513

Features

- Machined for standard deck blocks
- 1800-7300 RPM power band
- Single plane/open plenum design
- Square flange carburetor mounting

CARBURETOR RECOMMENDATIONS

0-80558 (830 CFM); 0-80443 (850 CFM); 0-80444 (850 CFM)

INSTALLATION

Will fit tall blocks with use of Weiland #8204 manifold spacer plate kit.

SPECIFICATIONS

Height - frt. 4.50", rr. 6.00". Shipping weight is 23 lbs.



X-CEerator



Chevrolet

396, 402, 427, 454, 502 V8
Rectangular Port V8

7521

Features

- Machined for standard deck blocks
- 2500-8200 RPM power band
- Single plane/open plenum design
- Square flange carburetor mounting

CARBURETOR RECOMMENDATIONS

0-80558 (830 CFM); 0-80443 (850 CFM); 0-80444 (850 CFM)

INSTALLATION

Will fit tall blocks with use of spacer P/N 8204.

SPECIFICATIONS

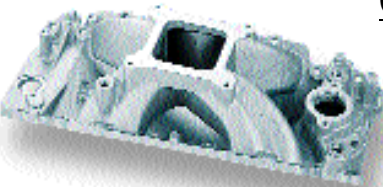
Height - frt. 5.81", rr. 7.38". Shipping weight is 24 lbs.





CHEVROLET MANIFOLDS

Part #



Chevrolet

396, 402, 427, 454, 502
Rectangular Port V8

300-5

Features

- Machined for standard deck blocks
- 4500-8500 RPM power band
- Single plane/ open plenum design
- Deep plenum design with isolated runners
- Square flange carburetor mounting

SPECIFICATIONS

Height - frt. 4.77"; rr. 6.16"

INSTALLATION

Will fit tall blocks with use of WEIAND spacer plate kit, P/N 8204.

CARBURETORS

FUEL INJECTION

FUEL PUMPS REGULATORS

INTAKE MANIFOLDS

SUPERCARGERS

FLAME ARRESTORS THROTTLE BODIES

IGNITION SYSTEMS & COMPONENTS

CONNECTS

HEADERS

WATER COMPARTMENTS

VALVE COVERS

TECHNICAL INFORMATION

INDEX

CARBURETOR I
0-80558 (830 CF)
0-80444 (850 CF)



Features

- Machined for standard deck blocks
- 2800-8500 RPM power band
- Single plane/open plenum design
- 4500 DOMINATOR HPflange carburetor mounting

Chevrolet

396, 402, 427, 454, 502
Rectangular Port V8

7522

CARBURETOR RECOMMENDATIONS

0-75011-1 (1250 CFM); 0-80340-1 (1050CFM)

INSTALLATION

Will fit tall blocks with use of WEIAND spacer plate kit, P/N 8204.

SPECIFICATIONS

Height - frt. 5.81", rr. 7.38". Shipping weight is 25 lbs.



Features

- Machined for tall deck blocks
- 2800-8500 RPM power band
- Single plane/open plenum design
- Manifold is machined for standard deck height distributor
- 4500 DOMINATOR HPflange carburetor mounting

Chevrolet

396, 402, 427, 454, 502
Rectangular Port V8

7527

CARBURETOR RECOMMENDATIONS

0-75011-1 (1250 CFM); 0-80340-1 (1050CFM)

SPECIFICATIONS

Height - frt. 6.13", rr. 7.69". Shipping weight is 28 lbs.



Commander 950 4-Bbl Pro-Jection System recommendations:

- 650 CFM, P/N 950-53
- 700 CFM, P/N 950-52
- 900 CFM, P/N 950-51

99

Tech Line: 270-781-9741

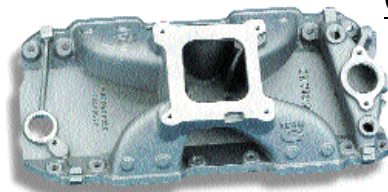
AIR SYSTEMS



CHEVROLET MANIFOLDS

Part #

Chevrolet



396, 402, 427, 454, 502
Oval Port V8

7523

CARBURETOR RECOMMENDATIONS

0-80558 (830 CFM); 0-80443 (850 CFM)

SPECIFICATIONS

Height - frt. 5.81", rr. 7.38". Shipping weight is 24 lbs.

INSTALLATION

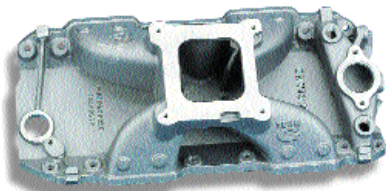
Will fit tall blocks with use of WEIAND spacer plate kit, **P/N 8206**.



Features

- Machined for standard deck blocks
- 2500-7900 RPM power band
- Single plane/open plenum design
- Square flange carburetor mounting

Chevrolet



396, 402, 427, 454, 502
Oval Port V8

7528

CARBURETOR RECOMMENDATIONS

0-80558 (830 CFM); 0-80443 (850 CFM)

SPECIFICATIONS

Height - frt. 6.13", rr. 7.69". Shipping weight is 28 lbs.



Features

- Machined for tall deck blocks
- 2500-7900 RPM power band
- Single plane/open plenum design
- Manifold is machined for standard deck height distributor
- Square flange carburetor mounting

Chevrolet



396, 402, 427, 454, 502
Oval Port V8

7524

CARBURETOR RECOMMENDATIONS

0-80340-1 (1050 CFM); 0-75011-1 (1250 CFM)

INSTALLATION

Will fit tall blocks with use of WEIAND spacer plate kit, **P/N 8206**.

SPECIFICATIONS

Height - frt. 5.81", rr. 7.38". Shipping weight is 25 lbs.



Features

- Machined for standard deck blocks
- 2800-8300 RPM power band
- Single plane/open plenum design
- 4500 DOMINATOR HPflange carburetor mounting

Commander 950 4-Bbl Pro-Jection System recommendations:

- 650 CFM, P/N 950-53
- 700 CFM, P/N 950-52
- 900 CFM, P/N 950-51

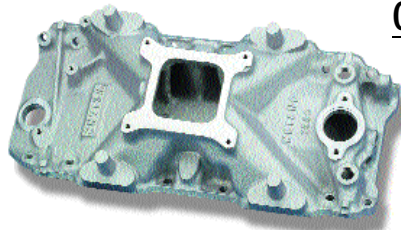
100

www.holley.com



CHEVROLET MANIFOLDS

Part #



Chevrolet

396, 402, 427, 454, 502
Oval Port V8

7554

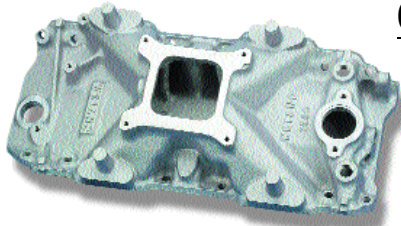
THROTTLE BODY RECOMMENDATIONS
9900-135 (1000 CFM)

Features

- Machined for standard deck blocks
- 2800-7000 RPM power band
- Designed for port fuel injection installations
- Injector and hold-down bosses are not machined
- Allows customizing of port fuel injection installation
- High Flow Fuel Rail Kits available.
- High Performance Fuel Injectors available.

INSTALLATION

Will fit tall blocks with use of WEIAND spacer plate kit, P/N 8206.



Chevrolet

396, 402, 427, 454, 502
Rectangular Port V8

7553

THROTTLE BODY RECOMMENDATIONS
9900-135 (1000 CFM)

Features

- Machined for standard deck blocks
- 2800-7000 RPM power band
- Designed for port fuel injection installations
- Injector and hold-down bosses are not machined
- Allows customizing of port fuel injection installation
- High Flow Fuel Rail Kits available.
- High Performance Fuel Injectors available.

INSTALLATION

Will fit tall blocks with use of WEIAND spacer plate kit, P/N 8204.



Chevrolet

396, 402, 427, 454, 502
Oval Port V8

5951

Features

- Machined for standard deck blocks
- 2800-7000 RPM power band
- Designed for port fuel injection installations
- Injector and hold-down bosses are not machined
- Allows customizing of port fuel injection installation
- High Flow Fuel Rail Kits available.
- High Performance Fuel Injectors available.

INSTALLATION

Will fit tall blocks with use of WEIAND spacer plate kit, P/N 8206.



CARBURETORS
FUEL INJECTION
FUEL PUMPS REGULATORS
INTAKE MANIFOLDS
SUPERCARGERS
FLAME ARRESTORS THROTTLE BODIES
RUN-IN SYSTEMS & COMPONENTS
CAMSHAFTS
HEADERS
WATER COMPONENTS
VALVE COVERS
TECHNICAL INFORMATION
INDEX



CHEVROLET MANIFOLDS

Part #



Chevrolet

396, 402, 427, 454, 502
Rectangular Port V8

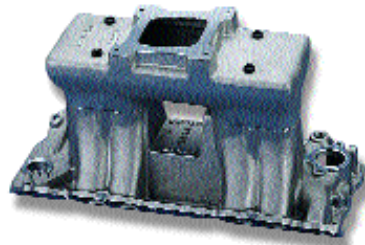
5955

Features

- Machined for standard deck blocks
- 2500-7800 RPM power band
- Designed for port fuel injection installations
- Injector and hold-down bosses are not machined
- Allows customizing of port fuel injection installation
- High Flow Fuel Rail Kits available.
- High Performance Fuel Injectors available.

INSTALLATION

Will fit tall blocks with use of WEIAND spacer plate kit, P/N 8204.



Chevrolet

396, 402, 427, 454, 502
Oval Port V8

3981

CARBURETOR RECOMMENDATIONS

0-80558 (830CFM); 0-80443 (850 CFM)

INSTALLATION

Will fit tall blocks with use of WEIAND spacer plate kit, P/N 8206.

SPECIFICATIONS

Height - frt. 11.56", rr. 12.00". Shipping weight is 31 lbs.

Features

- Machined for standard deck blocks
- 2500-7000 RPM power band
- 1 x 4 carburetor setup
- Square flange carburetor mounting
- Special D-shaped port runner design
- Large plenum chamber
- GM HEI ignition will not clear
- Separate tops, runners and gaskets available



Chevrolet

396, 402, 427, 454, 502
Rectangular Port V8

3985

CARBURETOR RECOMMENDATIONS

0-80558 (830CFM); 0-80443 (850 CFM)

INSTALLATION

Will fit tall blocks with use of WEIAND spacer plate kit, P/N 8204.

SPECIFICATIONS

Height - frt. 11.56", rr. 12.00". Shipping weight is 31 lbs.

Features

- Machined for standard deck blocks
- 2500-7000 RPM power band
- 1 x 4 carburetor setup
- Square flange carburetor mounting
- Special D-shaped port runner design
- Large plenum chamber
- GM HEI ignition will not clear
- Separate tops, runners and gaskets available



CHEVROLET MANIFOLDS

Part #



Chevrolet

396, 402, 427, 454, 502
Oval Port V8

1981

CARBURETOR RECOMMENDATIONS

0-80537 (750 CFM)

INSTALLATION

Will fit truck block with use of WEIAND #8206 manifold spacer plate kit.

SPECIFICATIONS

Height - frt. 10.12", rr. 10.93". Shipping weight is 30 lbs.

- Special D-shaped port runner design
- Large plenum chamber
- GM HEI ignition will not clear
- Separate tops, runners and gaskets available



Hi-Ram

Features

- Machined for standard deck blocks
- 2500-7800 RPM power band
- Square flange carburetor mounting

CARBURETORS

FUEL
MIXTURE

FUEL PUMPS
REGULATORS

INTAKE
MANIFOLDS

SUPERCARGERS

FLAME ARRESTORS
THROTTLE BODIES

IGNITION SYSTEMS
& COMPONENTS

CRANKSHAFTS

HEADERS

WATER
COMPONENTS

VALVE COVERS

TECHNICAL
INFORMATION

INDEX



Chevrolet

396, 402, 427, 454, 502
Rectangular Port V8

1985

CARBURETOR RECOMMENDATIONS

0-80537 (750 CFM)

INSTALLATION

Will fit truck block with use of WEIAND #8204 manifold spacer plate kit.

SPECIFICATIONS

Height - frt. 10.12", rr. 10.93". Shipping weight is 30 lbs.

- Special D-shaped port runner design
- Large plenum chamber
- GM HEI ignition will not clear
- Separate tops, runners and gaskets available



Hi-Ram

Features

- Machined for standard deck blocks
- 2500-7800 RPM power band
- Square flange carburetor mounting



Chevrolet

396, 402, 427, 454
Rectangular Port V8

300-45
Base Only

Benefits

- Designed for maximum power on competition engines
- Runner length designed to optimize the velocity and flow of the fuel/air intake charge to achieve greater cylinder filling at 8,500+ RPM
- Can run either model 4150 or 4500 Dominator carburetors depending on top/flange used
- 4500 Dominator top locates throttle bores directly over individual runner entries for optimum cylinder distribution

CARBURETOR RECOMMENDATIONS

• 0-80537 (750 CFM); 0-75010-1 (1150 CFM)

Interchangeable Tops		Throttle Linkage Kit
4150	4500 Dominator	
300-204	300-206	20-24

Holley
PRO DOMINATOR

Features

- Machined for standard deck blocks
- 6,500-10,000 RPM power band
- Individual runner/mini-plenum design

103

Tech Line: 270-781-9741

AIR SYSTEMS



CHRYSLER MANIFOLDS

Part #



Chrysler

318 (Late), 340, 360 V8

8007

Stock Heads

Features

- High rise/dual plane design
- Idle-6000 RPM power band
- Spread bore and square bore carburetor mounting flanges

CARBURETOR RECOMMENDATIONS

0-80551 (600 CFM Square bore); 0-80552 (6650 CFM Spread bore)

INSTALLATION

Square bore carburetors may require plate P/N 9006 to seal properly.

SPECIFICATIONS

Height - frt. 4.88", rr. 5.94". Shipping weight is 22 lbs.



Chrysler

318 (Late), 340, 360 V8

8022

Features

- High rise/dual plane design
- Idle-6800 RPM power band
- Square flange carburetor mounting

CARBURETOR RECOMMENDATIONS

0-80551 (600 CFM); 0-80559 (600 CFM); 0-9015 (750 CFM)

SPECIFICATIONS

Height - frt. 4.88", rr. 5.94". Shipping weight is 23 lbs.



Commander 950 4-Bbl Pro-Jection System recommendations:

- 650 CFM, P/N 950-53
- 700 CFM, P/N 950-52
- 900 CFM, P/N 950-51

104

www.holley.com



CHRYSLER MANIFOLDS

Part #



Chrysler

318 (from 1967), 340, 360 V8

7545

CARBURETOR RECOMMENDATIONS
0-80551 (600 CFM); 0-80559 (600 CFM); 0-9015 (750 CFM)

SPECIFICATIONS
Height - frt. 4.50", rr. 5.63". Shipping weight is 17 lbs.

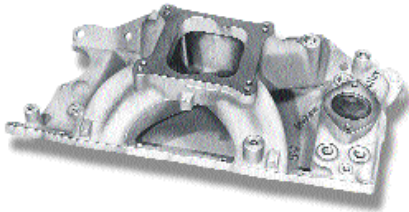
Features

- 1500-7000 RPM power band
- Fits stock Chrysler heads only
- Single plane/open plenum design
- Square flange carburetor mounting



X-CEerator

CARBURETORS
FUEL INJECTION
FUEL PUMPS REGULATORS
INTAKE MANIFOLDS
SUPERCARGERS
FLAME ARRESTORS THROTTLE BODIES
RUNNING SYSTEMS & COMPONENTS
CAMSHAFTS
HEADERS
WATER COMPONENTS
VALVE COVERS
TECHNICAL INFORMATION
INDEX



Chrysler

318 (from 1967), 340, 360 V8

300-8

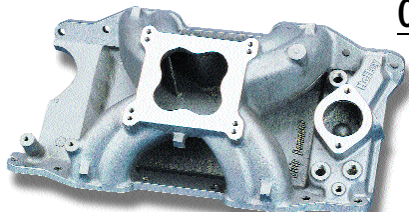
CARBURETOR RECOMMENDATIONS
0-80537 (750 CFM); 0-9015 (750 CFM); 0-9022 (800 CFM)

SPECIFICATIONS
Height - frt. 4.71", rr. 5.58"

Features

- 4500-8500 RPM power band
- Fits stock Chrysler heads only
- Single plane/high rise design
- Deep plenum with isolated runners
- Universal flange carburetor mounting

Holley



Chrysler

318 (from 1967), 340, 360 V8

300-17

CARBURETOR RECOMMENDATIONS
0-80537 (750 CFM); 0-9015 (750 CFM); 0-9022 (800 CFM)

SPECIFICATIONS
Height - frt. 4.72", rr. 5.66"

Features

- 4500-8500 RPM power band
- Fits Chrysler W-2 cylinder heads
- Single plane/high rise design
- Deep plenum with isolated runners
- Universal flange carburetor mounting

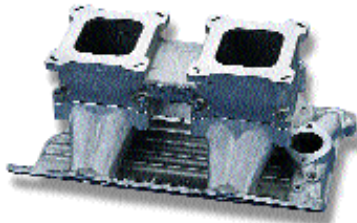
Holley

AIR SYSTEMS



CHRYSLER MANIFOLDS

Part #



Chrysler

318 (from 1967), 340, 360 V8

1995

CARBURETOR RECOMMENDATIONS

0-80537 (750 CFM)

SPECIFICATIONS

Height - frt. 8.93", rr. 9.37". Shipping weight is 27 lbs.



Hi-Ram

Features

- 3000-9000 RPM power band
- 2 x 4 carburetor setup
- Square flange carburetor mounting
- Special D-shaped port runner design
- Large plenum chamber
- Separate tops, runners and gaskets available



Chrysler

361, 383, 400 V8

8008

CARBURETOR RECOMMENDATIONS

0-80551 (600 CFM); 0-9015 (750 CFM)

SPECIFICATIONS

Height - frt. 3.62", rr. 4.00". Shipping weight is 18 lbs.



**ACTION
+PLUS**

Features

- Medium rise/dual plane design
- Idle-6000 RPM power band
- Square flange carburetor mounting



Chrysler

361, 383, 400 V8

7533

CARBURETOR RECOMMENDATIONS

0-80537 (750 CFM); 0-9015 (750 CFM); 0-9022 (800 CFM); 0-80444 (850 CFM)

SPECIFICATIONS

Height - frt. 4.69", rr. 5.69". Shipping weight is 16 lbs.



**TEAM
G**

Features

- 2700-7800 RPM power band
- Single plane design with open/isolated plenum
- Large plenum chamber
- Square flange carburetor mounting

Commander 950 4-Bbl Pro-Jection System recommendations:

- 650 CFM, P/N 950-53
- 700 CFM, P/N 950-52
- 900 CFM, P/N 950-51

106

www.holley.com

CHRYSLER MANIFOLDS

Part #



Chrysler

413, 426 Wedge and 440 V8

8009

CARBURETOR RECOMMENDATIONS

0-9015 (750 CFM); 0-80537 (750CFM)

SPECIFICATIONS

Height - frt. 3.25", rr. 3.69". Shipping weight is 17 lbs.



Features

- Low rise/dual plane design
- Idle-6000 RPM power band
- Square flange carburetor mounting

CARBURETORS

FUEL INJECTION

FUEL PUMPS REGULATORS

INTAKE MANIFOLDS

SUPERCHARGERS

FLAME ARRESTORS THROTTLE BODIES

IGNITION SYSTEMS & COMPONENTS

CRANKSHAFTS

HEADERS

WATER COMPONENTS

VALVE COVERS

TECHNICAL INFORMATION

INDEX



Chrysler

413, 426 Wedge and 440 V8

7534

CARBURETOR RECOMMENDATIONS

0-80558 (830 CFM); 0-80443 (850 CFM); 0-80444 (850 CFM)

SPECIFICATIONS

Height - frt. 4.38", rr. 5.31". Shipping weight is 16 lbs.



Features

- 3000-7800 RPM power band
- Single plane design with open/isolated plenum
- Large plenum chamber
- Square flange carburetor mounting



Chrysler

413, 426 Wedge and 440 V8

7538

CARBURETOR RECOMMENDATIONS

0-80340-1 (1050 CFM); 0-75011 (1250 CFM)

SPECIFICATIONS

Height - frt. 5.38", rr. 6.31". Shipping weight is 19 lbs.



Features

- 3200-8000 RPM power band
- Single plane design with open/isolated plenum
- Large plenum chamber
- 4500 DOMINATOR HP carburetor flange mounting

Commander 950 4-Bbl Pro-Jection System recommendations:

- 650 CFM, P/N 950-53
- 700 CFM, P/N 950-52
- 900 CFM, P/N 950-51

107

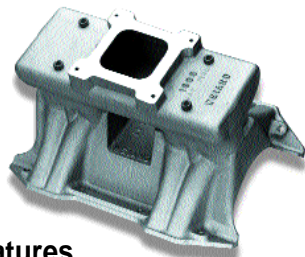
Tech Line: 270-781-9741

AIR SYSTEMS



CHRYSLER / FORD MANIFOLDS

Part #



Chrysler

413, 426 Wedge and 440 V8

3987

CARBURETOR RECOMMENDATIONS

0-80558 (830 CFM); 0-80443 (850 CFM)

SPECIFICATIONS

Height - frt. 10.93", rr. 11.37". Shipping weight is 26 lbs.

Features

- 2500-7000 RPM power band
- 1 x 4 carburetor setup
- Special D-shaped port runner design
- Large plenum chamber
- Square flange carburetor mounting
- Separate tops, runners and gaskets available



Hi-Ram



Chrysler

413, 426 Wedge and 440 V8

1987

CARBURETOR RECOMMENDATIONS

0-80537 (750 CFM)

SPECIFICATIONS

Height - frt. 9.50", rr. 10.31". Shipping weight is 26 lbs.

Features

- 2500-8500 RPM power band
- 2 x 4 carburetor setup
- Special D-shaped port runner design
- Large plenum chamber
- Square flange carburetor mounting
- Separate tops, runners and gaskets available



Hi-Ram



Ford

221, 260, 289, 302 V8
(except BOSS)

300-39

CARBURETOR RECOMMENDATIONS

0-80364 (450 CFM); 0-80551 (600 CFM)

SPECIFICATIONS

Shipping weight is 16 lbs.

Features

- Low rise/dual plane design
- Idle-5500 RPM power band
- Square flange carburetor mounting

Holley

Commander 950 4-Bbl Pro-Jection System recommendations:

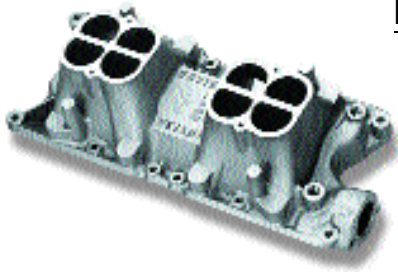
- 650 CFM, P/N 950-53
- 700 CFM, P/N 950-52
- 900 CFM, P/N 950-51

108

www.holley.com

FORD MANIFOLDS

Part #



Ford

289, 302 V8

5958

Features

- 2800-7000 RPM power band
- Designed for custom port fuel injection installations
- Injector and hold-down bosses are not machined
- Allows customizing of port injection installation
- High flow fuel rail kits available.
- High performance fuel injectors available.



CARBURETORS

FUEL INJECTION

FUEL PUMPS REGULATORS

INTAKE MANIFOLDS

SUPERCHARGERS

FLAME ARRESTORS THROTTLE BODIES

IGNITION SYSTEMS & COMPONENTS

CRANKSHAFTS

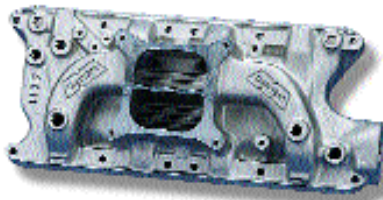
HEADERS

WATER COMPONENTS

VALVE COVERS

TECHNICAL INFORMATION

INDEX



Ford

221, 260, 289, 302 V8 (Exc. BOSS)

8011

CARBURETOR RECOMMENDATIONS

0-80364 (450 CFM); 0-80551 (600 CFM)

INSTALLATION

Will NOT fit 255 or 351W engines.

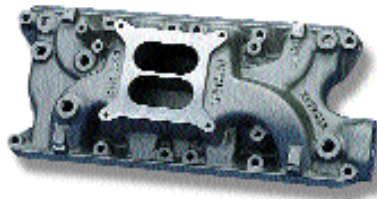
SPECIFICATIONS

Height - frt. 4.06", rr. 5.00". Shipping weight is 17 lbs.



Features

- Low rise/dual plane design
- Idle-6000 RPM power band
- Square flange carburetor mounting



Ford

221, 260, 289, 302 V8 (Exc. BOSS)

8020

CARBURETOR RECOMMENDATIONS

0-80551 (600 CFM); 0-80559 (600 CFM)

INSTALLATION

Fits GT-40 and TFS heads. Will NOT fit 255 or 351W engines. Manifold has a rear water crossover.

SPECIFICATIONS

Height - frt. 4.35", rr. 5.59". Shipping weight is 20 lbs.



Features

- High rise/ dual plane design
- Idle-6800 RPM power band
- Square flange carburetor mounting

Commander 950 4-Bbl Pro-Jection System recommendations:

- 650 CFM, P/N 950-53
- 700 CFM, P/N 950-52
- 900 CFM, P/N 950-51

109

Tech Line: 270-781-9741

AIR SYSTEMS



FORD MANIFOLDS

Part #



Ford

221, 260, 289, 302 (Exc. BOSS) V8

7515

Features

- 1500-7000 RPM power band
- Single plane/open plenum design
- Square flange carburetor mounting

CARBURETOR RECOMMENDATIONS
0-80551 (600 CFM); 0-80559 (600 CFM)

INSTALLATION

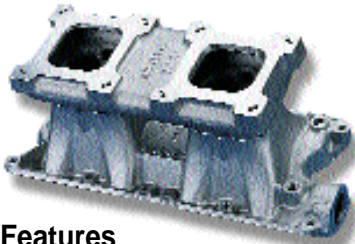
Will NOT fit 255 or 351W motors.
Spacer plate w/ plenum divider, P/N 7460 or 7461, can be used to develop more low RPM vacuum.

SPECIFICATIONS

Height - frt. 3.75", rr. 4.88". Shipping weight is 18 lbs.



X-CELerator



Ford

289, 302W V8

1988

Features

- 2500-8000 RPM power band
- 2 x 4 carburetor setup
- Square flange carburetor mounting
- Large plenum chamber
- Separate tops, runners and gaskets available

CARBURETOR RECOMMENDATIONS
0-80364 (450 CFM)

INSTALLATION

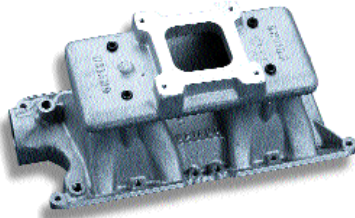
Stock electronic ignition will NOT clear.

SPECIFICATIONS

Height - frt. 8.81", rr. 9.25". Shipping weight is 24 lbs.



Hi-Ram



Ford

289, 302W V8

3988

Features

- 2500-7000 RPM power band
- 1 x 4 carburetor setup
- Square flange carburetor mounting
- Large plenum chamber
- Separate tops, runners and gaskets available

CARBURETOR RECOMMENDATIONS
0-80557 (750 CFM)

INSTALLATION

Stock electronic ignition will NOT clear. Carburetor linkage must be fabricated.

SPECIFICATIONS

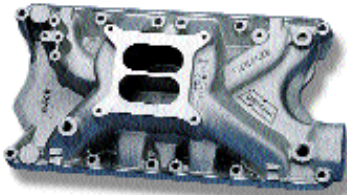
Height - frt. 9.37", rr. 10.43". Shipping weight is 24 lbs.



Hi-Ram

FORD MANIFOLDS

Part #



Ford

351W V8

8023

CARBURETOR RECOMMENDATIONS
0-80319-1 (600 CFM); 0-9015 (750 CFM)

INSTALLATION
Fits GT-40 and TFS heads.

SPECIFICATIONS
Height - frt. 4.37", rr. 5.06". Shipping weight is 22 lbs.



Features

- High rise/dual plane design
- Idle-6800 RPM power band
- Square flange carburetor mounting

CARBURETORS

FUEL
INJECTION

FUEL PUMPS
REGULATORS

INTAKE
MANIFOLDS

SUPERCHARGERS

FLAME ARRESTORS
THRUSTLE BODIES

IGNITION SYSTEMS
& COMPONENTS

CAMSHAFTS

HEADERS

WATER
COMPONENTS

VALVE COVERS

TECHNICAL
INFORMATION

INDEX



Ford

351C V8 (Including BOSS)

7516
2V Heads

7517
4V Heads

CARBURETOR RECOMMENDATIONS
0-9015 (750 CFM); 0-9022 (800 CFM)

INSTALLATION
If additional low-end vacuum is desired, order P/N 7460 or P/N 7461, spacer plate with plenum divider. Manifold will also fit on Ford 351M-400 series motors if P/N 8205, intake spacer kit is used.

SPECIFICATIONS
Height - frt. 4.00", rr. 5.00". Shipping weight is 22 lbs.



Features

- Single plane design
- 1500-7000 RPM power band
- Square flange carburetor mounting



Ford

351C, 351 BOSS V8

1994

CARBURETOR RECOMMENDATIONS
0-80557 (750 CFM)

INSTALLATION
Stock electronic ignition will NOT clear.

SPECIFICATIONS
Height - frt. 8.81", rr. 9.18". Shipping weight is 26 lbs.



Features

- 3200-9000 RPM power band
- Fits 4V heads
- 2 x 4 carburetor setup
- Large plenum design w/ individual runners
- Square flange carburetor mounting
- Separate tops, runners and gaskets available
- Can install on 351M/400 engines with spacer kit

111

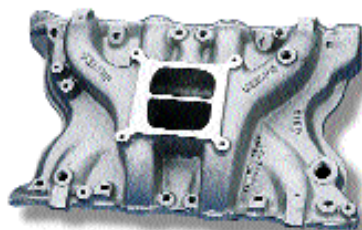
Tech Line: 270-781-9741

AIR SYSTEMS



FORD MANIFOLDS

Part #



Ford

351M/400 V8 (2V Heads)

8010

CARBURETOR RECOMMENDATIONS

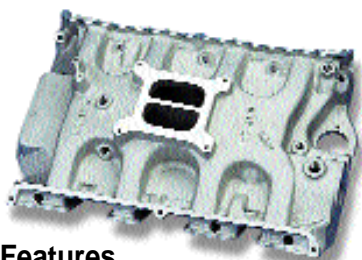
0-80319-1 (600 CFM); 0-9015 (750 CFM)

SPECIFICATIONS

Height - frt. 3.75", rr. 4.75". Shipping weight is 24 lbs.

Features

- High rise/dual plane design
- Idle-6000 RPM power band
- Square flange carburetor mounting



Ford

332, 352, 360, 390, 406, 410, 427, 428 V8

7282

CARBURETOR RECOMMENDATIONS

0-9015 (750 CFM); 0-80537 (750 CFM)

INSTALLATION

Fits engines only with the following port size: height 1.93", width 1.34".
Manifold has heat crossover passage.

SPECIFICATIONS

Height - frt. 3.93", rr. 5.68". Shipping weight is 27 lbs.

Features

- Single plane design
- Idle-6000 RPM power band
- Square flange carburetor mounting



Hi-Rise



Ford

429 (wedge), 460 V8

8012

CARBURETOR RECOMMENDATIONS

0-9015 (750 CFM); 0-80537 (750 CFM); 0-80444 (850 CFM)

INSTALLATION

Does not fit 1988-later cylinder head design. Port-matching manifold to heads is necessary for best performance results.

SPECIFICATIONS

Height - frt. 5.25", rr. 6.75". Shipping weight is 25 lbs.

Features

- High rise/dual plane design
- Idle-6800 RPM power band
- Square flange carburetor mounting



Commander 950 4-Bbl Pro-Jection System recommendations:

- 650 CFM, P/N 950-53
- 700 CFM, P/N 950-52
- 900 CFM, P/N 950-51

112

www.holley.com